



# ALASKA DIVISION OF HOMELAND SECURITY & EMERGENCY MANAGEMENT

SITUATION REPORT 23-348 • December 14, 2023



Toll-Free 1.800.478.2337

Anchorage Area 907.428.7000

SEOC 907.428.7100

<p><b><u>SEOC Preparedness Level</u></b></p> <p>Level 2 – Heightened Awareness</p>	<p><a href="http://ready.alaska.gov">http://ready.alaska.gov</a></p>	<p><b><u>National Terrorism Advisory System:</u></b></p> <p><a href="#">Read the NTAS Bulletin here</a></p>
<p><b><u>Maritime Security (MARSEC)</u></b> Level:1- Minimum Appropriate Security Measures</p>	<p><b>WHO Novel Coronavirus Pandemic (COVID-19):</b> <a href="#">2019 Novel Coronavirus</a></p>	<p><b><u>Alaska Military Installation Force Protection Level:</u></b> FPCON Bravo</p>

(Significant changes from previous situation reports are red.)

**Significant Issues:**

**Wrangell Landside Disaster:**

This week a joint preliminary damage assessment (JPDA) team from State of Alaska and FEMA will be traveling to Wrangell and Prince of Wales Island to validate response costs and damage estimates for repairs from landslide events in Wrangell and across Prince of Wales Island. This information will be used to determine if a request for federal assistance is warranted from the State of Alaska.

State Individual Assistance Hotline and website is open for Wrangell and Prince of Wales Island residents. Individual Assistance Applications can be submitted at <https://www.ready.alaska.gov/Recovery/IA> or by phone 1(844) 445-7131. The deadline to apply for State Individual Assistance is January 27, 2024.

**Quinhagak Power Outage:**

SEOC received a signed local declaration from the City of Quinhagak yesterday due to the community power outage from December 8. Yesterday afternoon the SEOC was notified that the Governor declared a state disaster for Quinhagak.

SEOC has been fully engaged with a multiagency response to address mass care needs within in the community, restoration and repairs of powerlines and transformers. Local operators continue to make repairs to the power system and utility lines within the community.

**State of Alaska Department of Health (DOH)**

The DOH stands ready to assist with all aspects of public health and in the event of a public health emergency, supported by the SEOC and other state departments as required. For current information, see:

<https://health.alaska.gov/dph/Pages/default.aspx>

<https://health.alaska.gov/dph/Emergency/Pages/prepared/default.aspx>

## NTAS Bulletin

The U.S. Department of Homeland Security issued an updated National Terrorism Advisory Bulletin on May 24, 2023. The current and expired bulletins can be viewed at the below link.

<https://www.dhs.gov/national-terrorism-advisory-system>

## Travel Alerts and Conditions

Thompson Pass is currently closed from MP 12 to 65 due to avalanche hazards.  
Klondike Highway is closed due to heavy snowfall.

For current driving conditions, dial 511 or visit: <https://511.alaska.gov/>

## Barry Arm Landslide / Tsunami Risk

For the latest information on the Barry Arm Landslide and Tsunami risk, click here:

<https://dggs.alaska.gov/hazards/barry-arm-landslide.html>

## Earthquakes

United States Geological Service (USGS) Earthquake Information: <http://earthquake.usgs.gov/>

National Tsunami Warning Center: <http://tsunami.gov/>

## Alaska Volcanoes

**Great Sitkin** Alert Level: **Watch** and Aviation Color Code: **Orange**

**Shishaldin** Alert Level: **Watch** and Aviation Color Code: **Orange**

**Trident** Alert Level: **Advisory** and Aviation Color Code: **Yellow**

For Alaska Volcano updates, go to: <https://www.avo.alaska.edu/>

## Air Quality Index (AQI) Advisories

For the most up to date Air Quality Index Advisories:

<http://dec.alaska.gov/Applications/Air/airtoolsweb/Home/Index>

## Spills of Oil and Hazardous Substances

The Alaska Division of Environmental Conservation (ADEC) Spill Prevention and Response page is located at:

<https://dec.alaska.gov/spar/>

## Alaska Cyber Security Information

State Employees may sign up for cyber security notifications and alerts at

<https://oit.alaska.gov/security>

Cybersecurity and Infrastructure Security Agency (CISA)-Cybersecurity Services and Tools:

[www.cisa.gov/free-cybersecurity-services-and-tools](http://www.cisa.gov/free-cybersecurity-services-and-tools)

## Avalanche Hazards:

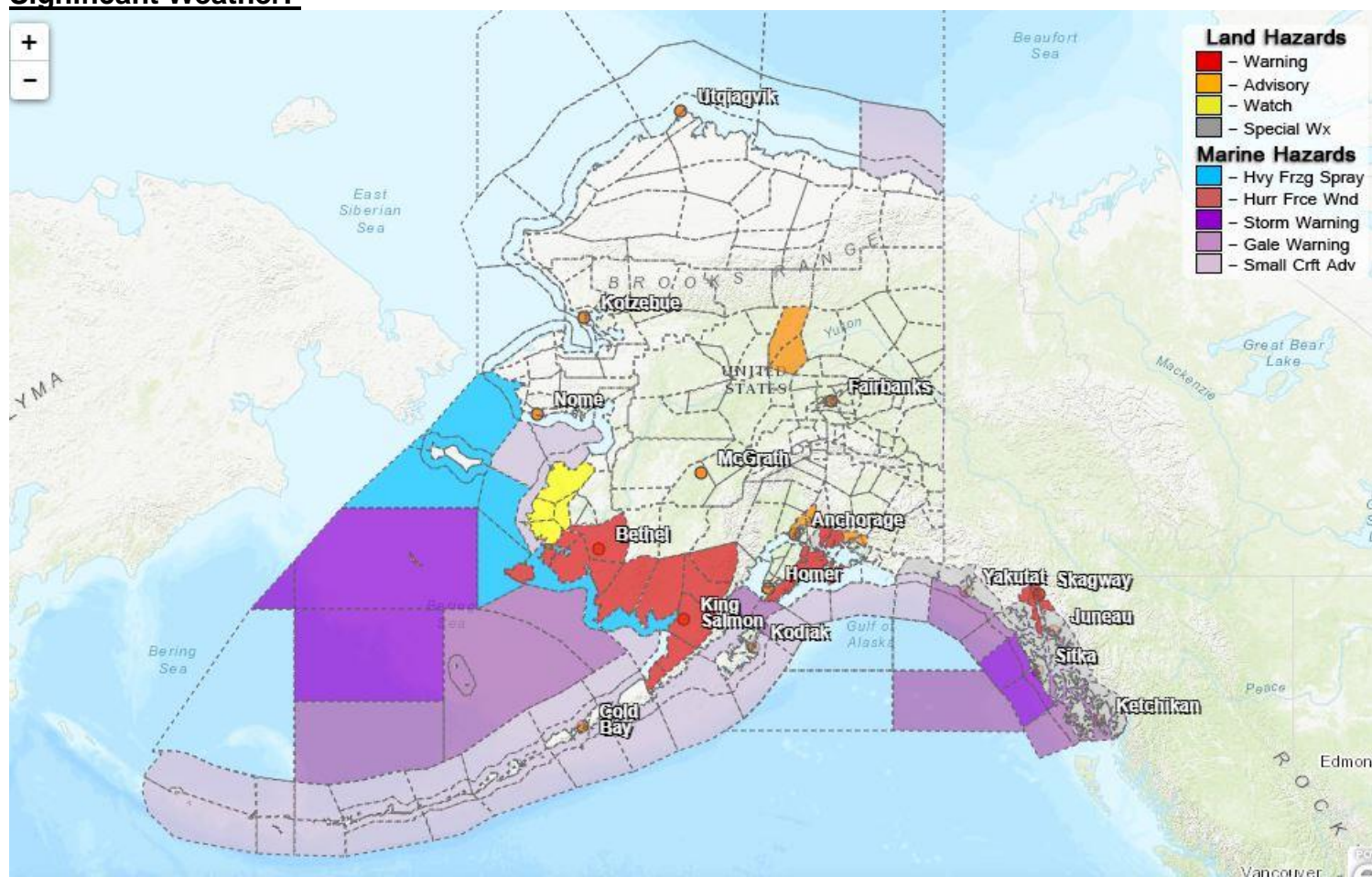
Avalanche danger for Valdez is listed as **considerable at all elevations**.

Avalanche danger for Cordova is low below 1,000ft, moderate above 1,000 ft.

Avalanche danger for Turnagain Pass is **moderate below 1,000ft and considerable above 1,000ft**

For more information and the most current avalanche conditions go to <https://alaskasnow.org>

## **Significant Weather:**



### **Dense Fog Advisory: Anchorage, East Turnagain Arm, Glenn and Parks Highway east to Palmer, Butte, Glenn Highway toward Chugiak, and Birchwood**

- Locally dense fog until noon.

### **Winter Storm Warning: Municipality of Skagway and Haines, including the Haines and Klondike Highways:**

- Heavy snow expected. Total snow accumulations of up to 7 inches for Haines and Skagway. Up to 24 inches along the Haines Highway and Klondike Highway with wind gusts to 40 mph till 11 PM Thursday evening.

### **Blizzard Warning: Kuskokwim Delta, and Bristol Bay**

- Blizzard conditions expected until 9 AM Friday. Dangerously cold wind chills as low as 40 below zero with total snow accumulations of up to 7 inches.

### **Blizzard Warning: Western Prince William Sound**

- Blizzard conditions due to blowing snow expected until 6 PM this evening. Winds gusting as high as 45 mph. Visibility reduced to as low as one quarter mile with whiteout conditions possible.

### **Special Weather Statement: East Turnagain Arm; Western Prince William Sound**

- Moderate to heavy snow showers will continue across the Seward Highway Corridor from Girdwood and Whittier south through Turnagain Pass to the Hope Cutoff through Thursday morning with 3 inches of accumulation possible.
- Snowfall rates in heavier snow showers could reach up to one inch per hour, leading to significantly reduced visibility at times with gusty winds up to 25 mph.
- Gusty winds and blowing snow are also likely along the Portage Glacier Road to Whittier.

### **Winter Storm Watch: Yukon Delta Coast, Dalton Highway Summits**

- Snow and blowing snow tell Friday morning. Near blizzard conditions possible. Total snow accumulations of 1 to 2 inches possible. Large snow drifts could form.
- Winds could gust as high as 40 mph. Visibility of one quarter mile or less at times possible. Travel may be very difficult.

### **Winter Weather Advisory: Northeast Prince William Sound, and Thompson Pass**

- Blowing snow expected. Winds gusting as high as 40 mph. Visibility reduced to as low as one half mile tell 9 PM this evening.
- Winds are expected to peak in intensity between noon and 4 pm before diminishing Thursday night.

### **Special Weather Statement: City and Borough of Yakutat; Glacier Bay; Eastern Chichagof Island; Cape Fairweather to Lisianski Strait; City and Borough of Sitka; Admiralty Island; City and Borough of Juneau; Petersburg Borough; Western Kupreanof and Kuiu Island; Prince of Wales Island; City and Borough of Wrangell; Ketchikan Gateway Borough; City of Hyder; Annette Island**

- Southerly wind gusts peaking at 40 to 50 mph also expected late into Thursday evening.
- The second in a series of strong fronts moves over the AK Gulf then into the Panhandle tell Thursday night bring in snow/rain accumulations of up to 3 inches.
- Since rivers and stream levels were elevated from previous heavy rain, the additional rainfall will not take as long to bring these waterways to near bankful, however no flooding expected at this time.

For more information and the most current weather, Watches / Warnings / Advisories go to:

<https://www.weather.gov/arh/>

**The Next Situation Report** will be **December 15, 2023**. A significant change in the situation or the threat level will prompt an interim report. This report is posted on the internet at

<https://ready.alaska.gov/sitrep>.

To register for email distribution, go to <http://list.state.ak.us/mailman/listinfo/dhsem.situation.report>. Direct questions regarding this report to the SEOC at 907-428-7100 or [seoc@alaska.gov](mailto:seoc@alaska.gov)